

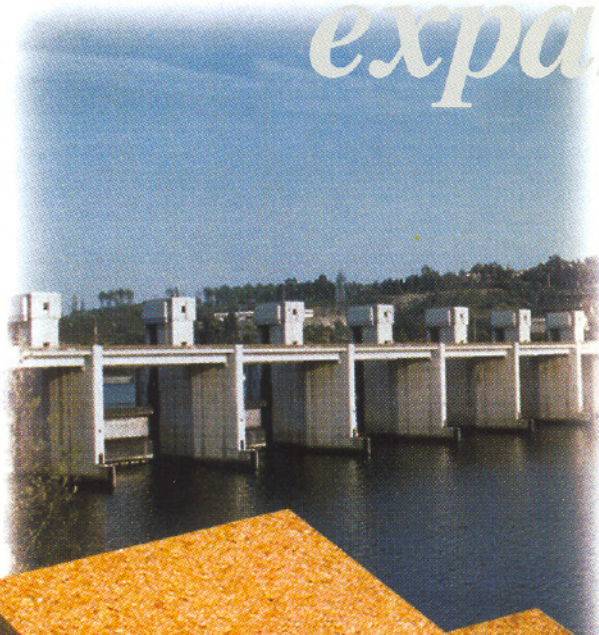
# ExpandaPRODUCTS

The right answer to crack problems

- EASY  
INSTALLATION

*expansion*

- EXPANDS  
IN ONE  
DIRECTION  
ONLY



- FOLLOWS THE  
MOVEMENTS  
OF THE  
CONCRETE



*HIGH PERFORMANCE*

*UNDER EXTREME CONDITIONS*



- EXPANSION  
JOINT

*joints*

- DOES  
NOT  
EXTRUDE  
BEYOND THE  
JOINT

KEEPING TREES ALIVE  
EVERY YEAR WE STRIP  
THE BARK OF THOUSANDS  
OF COHR OAK TREES  
THIS IS AN ESSENTIAL  
PROCESS FOR THEIR SURVIVAL





**With Expanda, techonology goes back to nature**

Made of agglomerated cork granules bound with a resin, Expanda is used principally as an expansion joint in industrial construction. The materials used in the manufacturing process are highly sophisticated and specially designed to neutralise the expansion and contraction phenomena wich can jeopardise concrete constructions. Expanda is thus an excellent protection against cracks. A natural product, Expanda can be used anywhere, regardless of climatic conditions.

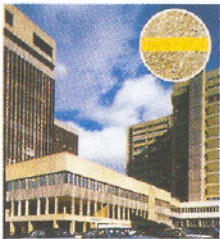


**Whether you are dealing with expansion or contraction, Expanda has the answer.**

Often related to temperature variations, expansion and contraction are frequently encountered in concrete constructions. If they are not deal with, they can cause serious damage. Expanda joints neutralise these phenomena, thus preventing cracks and burst concrete.

**Expanda offers you a reliable, practical solution in dealing with expansion and contraction problems whenever you build with concrete**

**Expanda, an amazing ability to adapt.**



Expanda will surprise with the way it so easily adapts, whether we are talking about the way it is installed or its many different applications. The impressive flexibility of the material means that it can withstand continuous strain without suffering the slightest deterioration. Expanda requires no protection or synthetic base when you pour the concrete, whatever the moisture conditions. Expanda is the ideal solution for mechanical foundations because it can be inserted into the joints at any phase of the construction. Expanda is also available with a self-adhesive band on its upper face to ensure greater protection. You simply remove the band once the concrete is dry, and you have a completely dry and waterproof edge.

**Rigorous technical specifications**

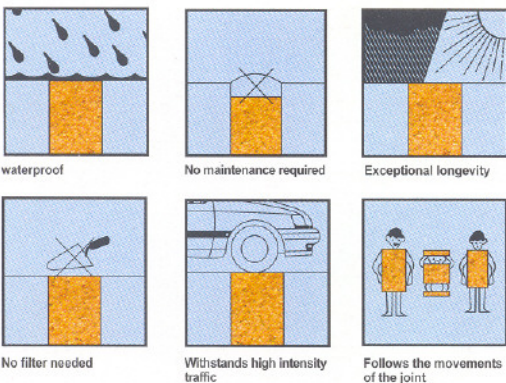
Expanda expands in one direction only, it does not extend beyond the joint and its physical properties do not deteriorate. Very flexible and elastic, Expanda is nevertheless chemically inert and runs no risk of decomposition.

**Specifications**

Expanda meets ASTM D 1752 /84 Type II and III standars and has been tested using ASTM D 545 methods.

Type II Expanda and Type III SELF-EXPANDA have been tested and approved by the following laboratories:

- . Harry Stranger Ltd / USA
- . Crippen Laboratories Inc. / USA
- . Singapore Institute of Standards and Industrial Research / Singapore
- . Departement of Science Service / Thailand



**Technical Specifications:**

- Contraction** 50% thickness with weigh of 50 - 1500 PSI (0.35 MPa and 10.5 MPa)
- Recovery** 90% of its original thickness following a 50% compression
- Expansion** There is a 1/4 (6.35 mm) expansion when it is subjected to a 50% compression with respect to its original thickness.

**TYPE III SELF-EXPAND:**

Immersed in boiling water for one hour, Type III SELF-EXPANDA will expand at least 140% of its original thickness.

**Resistance to HCl:**

Immersed in boiling HCl, EXPANDA will not disintegrate.

**Agring:**

EXPANDA shows no sign of deterioration even after simulated 10-cycle agring test.

**Size variation:**

Thickness +/- 1.6 mm    Width +/- 3.2 mm    Length +/- 6.4 mm

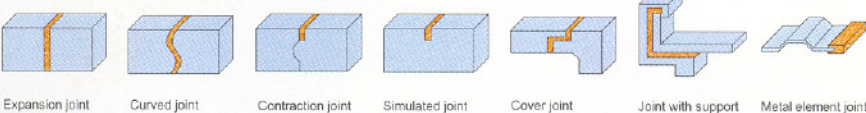
**Thickness:**

EXPANDA comes to you in standard thicknesses of 12, 15, 20 and 25 mm. Other thinesses are available upon request.

**Storage:**

EXPANDA should be kept in its original packaging and in a dry place until installed.

**Expanda® an answer to all your problems**



doc - AGC.015



**AMORIM**

**Corticeira Amorim - Indústria, S.A.**

Rua de Meladas Nº 260 (Ap. 1) - 4536-902 MOZILOS VFR - PORTUGAL

Phone: +351.22.747.5300 - Fax: +351.22.747.0461/04

Email: aglos@corticeira-amorim-industria.pt

http://www.members.tripod.com/~CAIAGLOS/

Capital Social: 2.000.000.000\$00 - Registo C.R.C. Santa Maria da Feira Nº 3722 - Contribuinte Nº PT: 502.546.255